



PRODUCT CATALOG

Providing peace of mind for manufacturing

GAGES | FIXTURES | TOOLING | TECHNOLOGY | SOFTWARE | AUTOMATION



Maya delivers repeatable, consistent, and accurate products for our customers.

Who is Maya Gage?

Maya Gage was founded in 1976. Maya’s customers at that time were the top gage companies in the Detroit Metropolitan area. The word spread quickly of a high-quality jig grinding shop with good delivery and dedicated craftsmen. As we grew into our new role as a premier, fine precision shop, we became an ISO 9000 facility, US Military certified, and a WBENC company thus assuring our quality and systems are maintained to provide superior quality and services. Maya Gage is strategically positioned to tackle projects from a multitude of industries which gives us a diverse competitive advantage.

Mission:

To provide peace of mind for manufacturing. Maya delivers repeatable, consistent, and accurate products for our customers.

Vision:

Maya strives to build the most technologically advanced gages in the world. Accomplishing this comes from hiring the best our industry has to offer and by partnering with local universities in developing new talent. We also strive to be a cost effective, time sensitive solution. We do not discriminate on the types of measuring devices, we use the most accurate, cost effective solution, for every project.



Table of Contents

- AUTOMATIC & SEMI-AUTOMATIC GAGES 4
- AIR GAGING..... 5-6
- CAMERA & VISION..... 7
- PREFERRED SUPPLIERS 8
- FUNCTIONAL FIXTURES GD & T 8
- VARIABLE FIXTURES..... 9
- WORKHOLDING / EOAT 10
- SOFTWARE..... 11
- TURN KEY SOLUTIONS 12
- PROTOTYPES \ PRODUCTION..... 12
- DESIGN ENGINEERING SERVICES 13
- NON-CONTACT GAGING 14
- AUTOMATION..... 15

MANUFACTURED DETAILS

ID Size	Design/Build	Spindle Only	Handle/Adapter/ Hose Assy	Stop Ring	
2 Orifice (1 output)	.070"-.093"	\$ 1,296	\$ 58	\$ 70	
2 Orifice (1 output)	.0935"-.203	\$ 1,101	\$ 58	\$ 70	
2 Orifice (1 output)	.2035"-.296"	\$ 751	\$ 58	\$ 70	
2 Orifice (1 output)	.2965"-.484"	\$ 716	\$ 58	\$ 70	
2 Orifice (1 output)	.4845"-.859"	\$ 716	\$ 58	\$ 70	
2 Orifice (1 output)	.8595"-1.00"	\$ 722	\$ 58	\$ 70	
2 Orifice (1 output)	1.005"-1.5"	\$ 761	\$ 58	\$ 70	
2 Orifice (1 output)	1.5005"-2.00"	\$ 782	\$ 58	\$ 70	
2 Orifice (1 output)	2.00"-2.5"	\$ 782	\$ 58	\$ 95	
2 Orifice (1 output)	2.5005"-3.00"	\$ 782	\$ 58	\$ 95	
2 Orifice (1 output)	3.0005"-3.5"	\$ 828	\$ 58	\$ 95	
2 Orifice (1 output)	3.5005"-4.00"	\$ 828	\$ 58	\$ 95	
3 Orifice (1 output)	.070"-.093"	\$ 1,426	\$ 58	\$ 70	
3 Orifice (1 output)	.0935"-.203	\$ 1,231	\$ 58	\$ 70	
3 Orifice (1 output)	.2035"-.296"	\$ 881	\$ 58	\$ 70	
3 Orifice (1 output)	.2965"-.484"	\$ 846	\$ 58	\$ 70	
3 Orifice (1 output)	.4845"-.859"	\$ 846	\$ 58	\$ 70	
3 Orifice (1 output)	.8595"-1.00"	\$ 852	\$ 58	\$ 70	
3 Orifice (1 output)	1.005"-1.5"	\$ 891	\$ 58	\$ 70	
3 Orifice (1 output)	1.5005"-2.00"	\$ 912	\$ 58	\$ 70	
3 Orifice (1 output)	2.00"-2.5"	\$ 912	\$ 58	\$ 95	
3 Orifice (1 output)	2.5005"-3.00"	\$ 912	\$ 58	\$ 95	
3 Orifice (1 output)	3.0005"-3.5"	\$ 958	\$ 58	\$ 95	
3 Orifice (1 output)	3.5005"-4.00"	\$ 958	\$ 58	\$ 95	
A/E Convertor	USB Connector	Mount & Regulator	Non-SPC Software	SPC Software	Basic Software Programming
\$ 990	\$ 540	\$ 250	\$ 1,500	\$ 2,760	\$ 140

- 'Design & Build' does not include design approval, though one can be provided for an added cost.
- PC not priced here, customer to provide or can be provided for added cost.
- Masters not priced here, customer to provide or can be provided for added cost.
- Specialty 'non-standard' spindles can also be quoted!
- Prices subject to change at Maya management discretion.

Our air gages are the most robust, accurate available. Our proprietary construction makes the orifice nearly indestructible. The technology we offer makes data collection simple connecting to any Windows PC. Sub-Micron gage studies are common using our method!

Air Gage

Maya builds custom air gages for many different applications. We have engineers on staff that design & build the gages. We also take the air gages to a digital output to a PC or tablet. With customized screens & data collection, Maya Gage Logix software can measure & store the data.



Maya's standard to building automatic gages is cost effective & quick to build. Our standards utilize a PC to take measurements, make motions, tool compensate, machine control communication & much more. This eliminates the need for costly PLCs.



Rotating
Fixture

Slides

◀ Brake Rotor Runout Gage

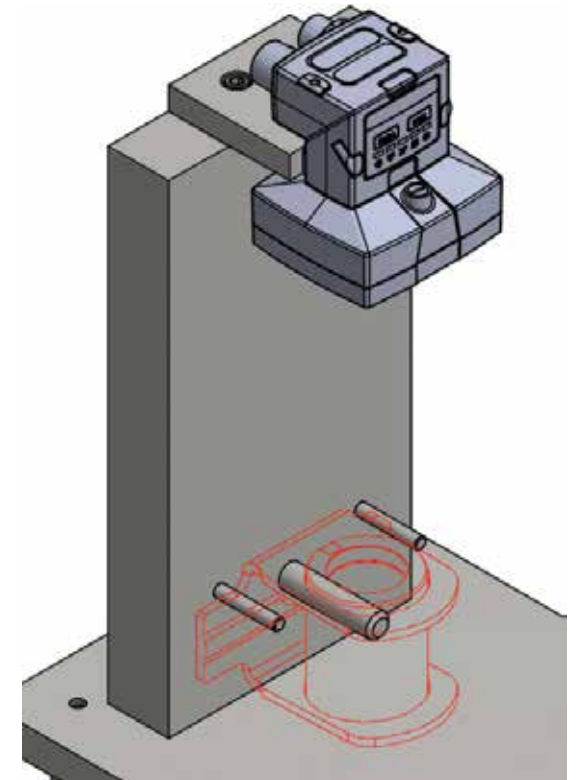
Gage highlights: Robot or operator load, light curtain integration, 13 probes, Keyence color sensor, paint dabber, pin stamper, rotary table, encoder. Gage marks worst TIR location.



▲ Automatic Gages

Fully integrated into customer's assembly production lines. Our gages can accept parts from multiple machines & tool compensate each one based on trends and analysis.

Whether it's identification of a bar code for traceability, visual measurement characteristic, virtual poke yoke, Maya can integrate for you! We have cameras installed on assembly lines, bench gages & in-line automatic gaging. Cameras we have success using include Cognex, Keyence, Nikon and more!



PREFERRED SUPPLIERS

Maya sources a multitude of products from many companies all around the world. Our goal is to find the right product for your project regardless of the manufacturer. If we believe it will perform the best for your project, that's the product we will suggest! We also are able to buy components / replacement components from some of our best suppliers. We are happy to provide pricing, contact sales@mayagage.com today!



FUNCTIONAL FIXTURES

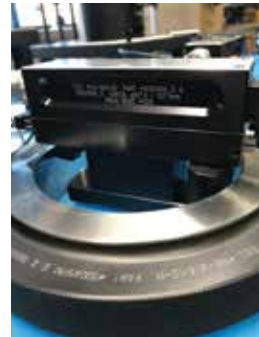
TP Gages

Maya designs, builds, certifies all variations of functional gaging, shown here are two true position gages, must GO @ MMC & a stator shaft located on a ball arbor.



Masters

Masters commonly go with most variable gages. We produce & certify our own masters. But can also build to your print.



VARIABLE FIXTURES

Sweep Gage

This particular gage used Maya Gage Logix computer software, & 4 sweeps to perform over 20 checks within a connecting rod part for a customer. Checks included position, ream depth, and diameter of holes! This gage had R&R results all under .0025mm for all 20 checks. Cycle time with that many checks is still less than :45 seconds. All results are stored & trend analysis is available with our software.

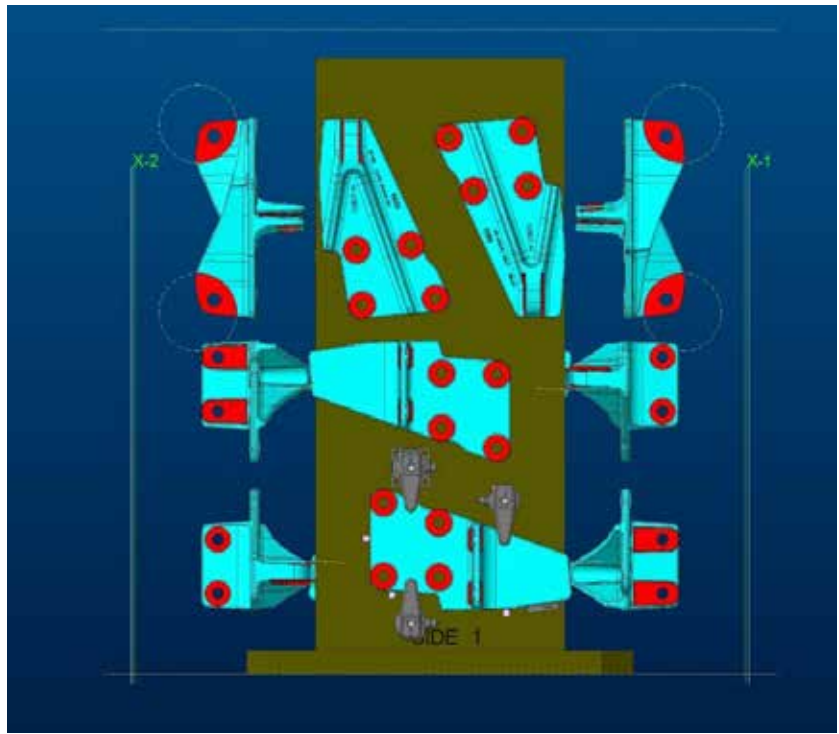


Variable Gage Bench

This bench has 6 Maya gages utilizing Maya Gage Logix software. These gages include: flatness, parallelism, inside diameters, outside diameters, runout. The operator begins the sequence with one part & the software instructs them on which gage to start with & how to proceed. After all 6 gages are used and the checks are complete, results are displayed & stored. This system also outputs to PLEX.



Maya has always been a leader in precision custom gages & fixtures. We also design & build workholding, End of Arm Tooling for our customers! Doesn't it make sense to have one source for the gage builder, machining fixture & EOAT?

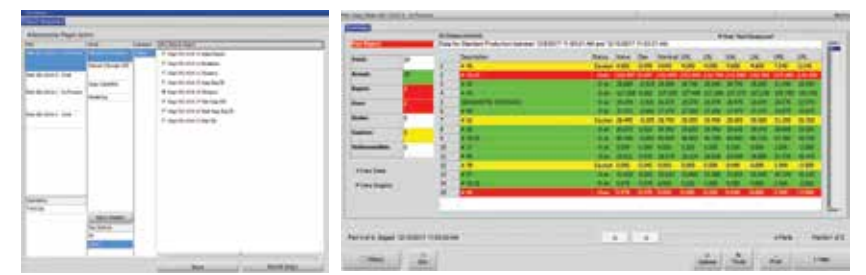


AVAILABLE SOFTWARE

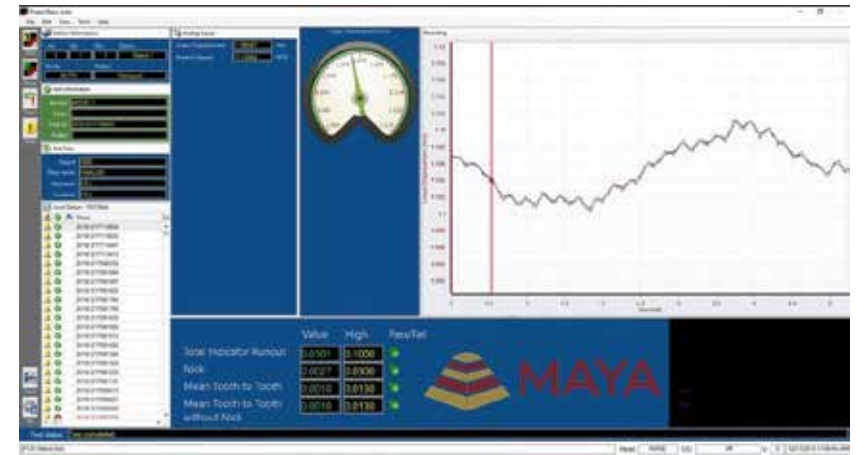
Gage Logix Pro

The pro version of gage mate allows the user to control auto, semi-auto, and manual gaging. The Gage Logix Pro allows users to control gage motions, and save collected data. SPC charting is included in this software package.

This software, even though it's PC based, can not only store measurements & give operators customized screen, but with its custom MMI program it can control motions & send tool compensation signals to machine controls.



ROLL TEST GAGE



Maya builds some of the most accurate, repeatable, cost effective roll test gages available! Everything is built in-house & can measure TIR, NICK, Tooth to Tooth Measurements. The custom software has the capability & speed to display .001mm increment changes from tooth to tooth. Small & compact, these gages can sit on a bench top with a PC based software.

TURN KEY SOLUTIONS

Maya can provide turnkey solutions—gages, software and computers—everything is ready to go upon arrival.

Dual Bench Gage

Maya provided a solution for a total of 6 parts, with over 100 checks, variable and attribute. The system utilizes Gage Logix software, blue tooth variable units and sequential LED lights for easy operator interface.



PROTOTYPES & 3D PRINTING

Maya has the capability to help with your prototype part. Been wanting to 3D print an object out of steel but don't know where to start? Let our engineers source the right material & machine to print your part. Usually takes 2-4 weeks & many different material types as options.

Maybe you have a concept to measure parts differently? As the integrator, Maya has an array of options to choose from: digital probes, air to electronic gaging, non-contact measurement, laser measurement. Let us work together with you to develop the most cost effective, accurate solution!

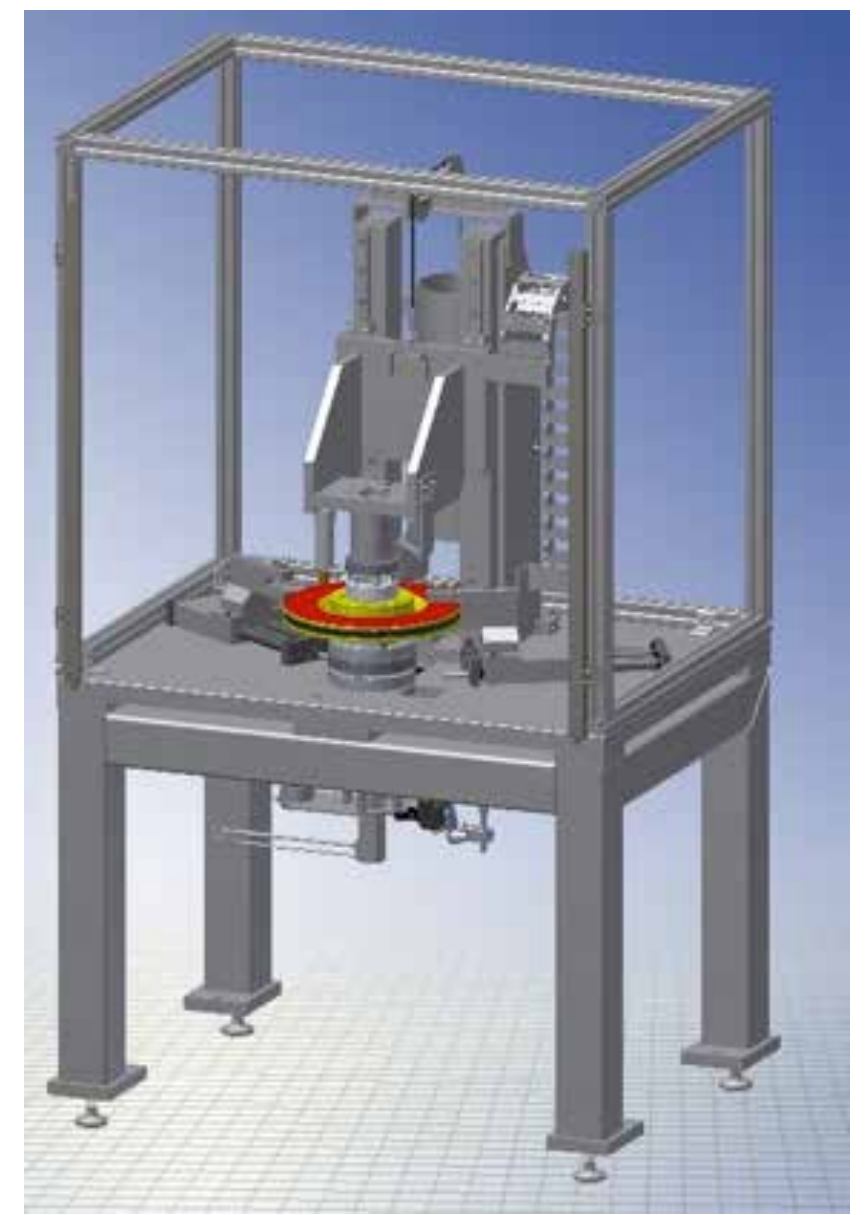
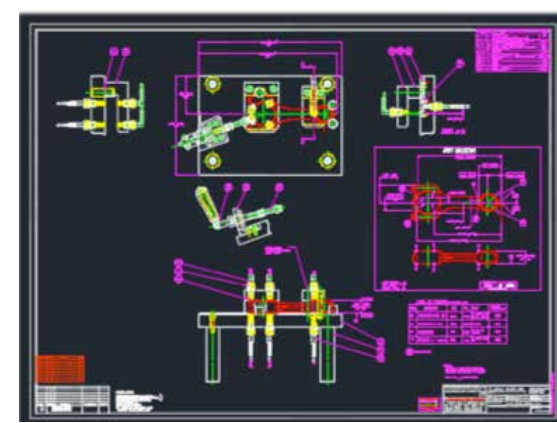
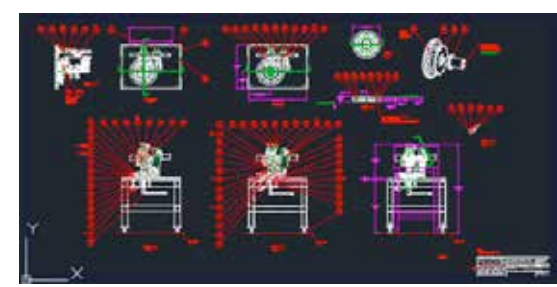


DESIGN/ENGINEERING SERVICES

We have a team of designers with over 150 years of combined experience.

Design services are available in:

- AutoCad
- PRO/Engineer (PTC)
- Autodesk Inventor
- SolidWorks



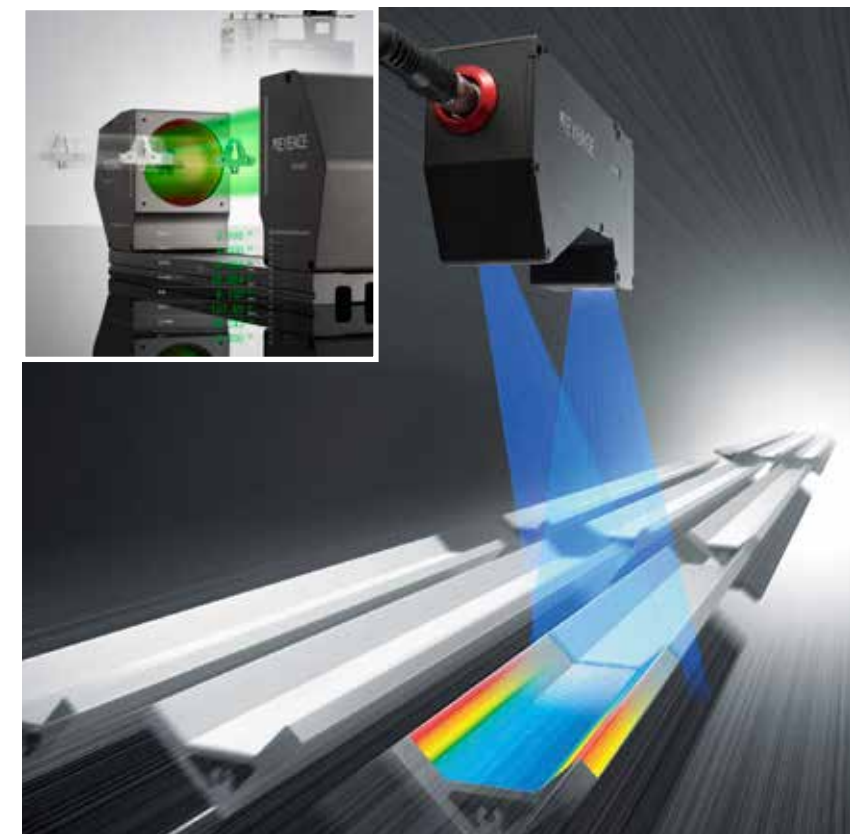
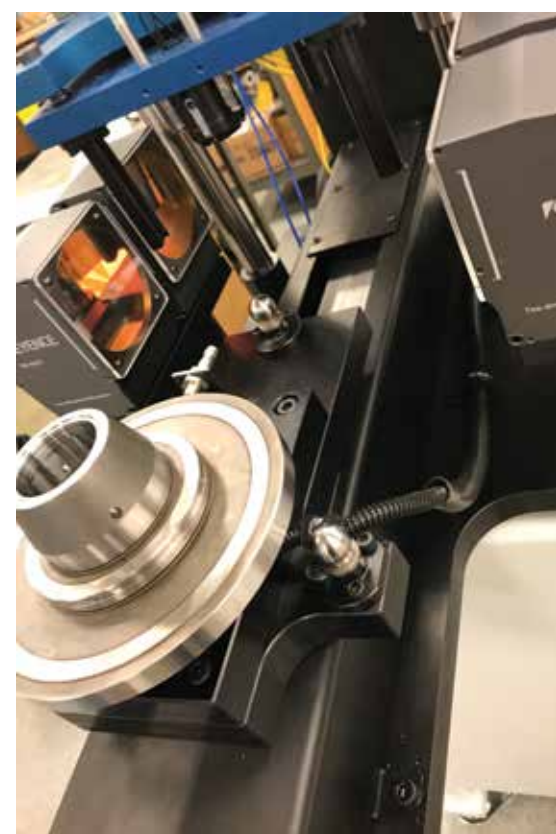
Have you needed and wanted non contact, but don't have a source for fixturing it or storing measurements? Non-contact gaging has quickly emerged as an accurate, repeatable source!

"Hybrid"

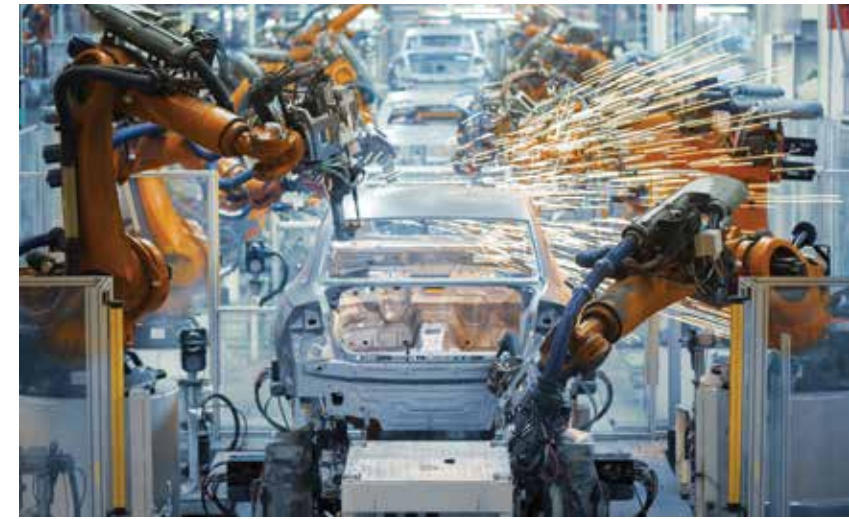
This is an automatic gage that incorporates traditional contact gaging & non-contact 2D optical micrometers. Gage study results using the optical micrometers were under .0035mm for average range.

Non-Contact Measurement Solutions

We have tested an array of products to determine the best cameras, lasers, or optical micrometers for your project. Have you wanted to utilize non-contact gaging but don't know where to start? We can integrate the latest technology into our gages & software to produce the results you are looking for! These devices are accurate & repeatable with results of less than 2 micron! If you have a difficult feature that you think this might be the right solution, let our engineers try to help.



Maya can provide gantry systems for the pickup and placement of parts on an automatic gage. We have partnerships who help make this service affordable. Maya is also, able to provide robotics to work alongside our gages with loading and unloading. Conveyor systems to move the parts from station to station can be provided by Maya turn-key. We're here to help with all your automation needs!



What is tool compensation?

Tool compensation is the process of measuring a part, storing said measurements, & after a trend analysis is complete, send that information back to the machine control to 'comp' the machine automatically. Parameters are set by the engineer & this process of tool comping machines has significant cost savings for the end user!





Corporate Office
37000 Grand River Ave.
Suite 245
Farmington Hills, MI 48335

Manufacturing Headquarters
20770 Parker St.
Farmington Hills, MI 48335

(248) 471-0820 \ www.mayagage.com
