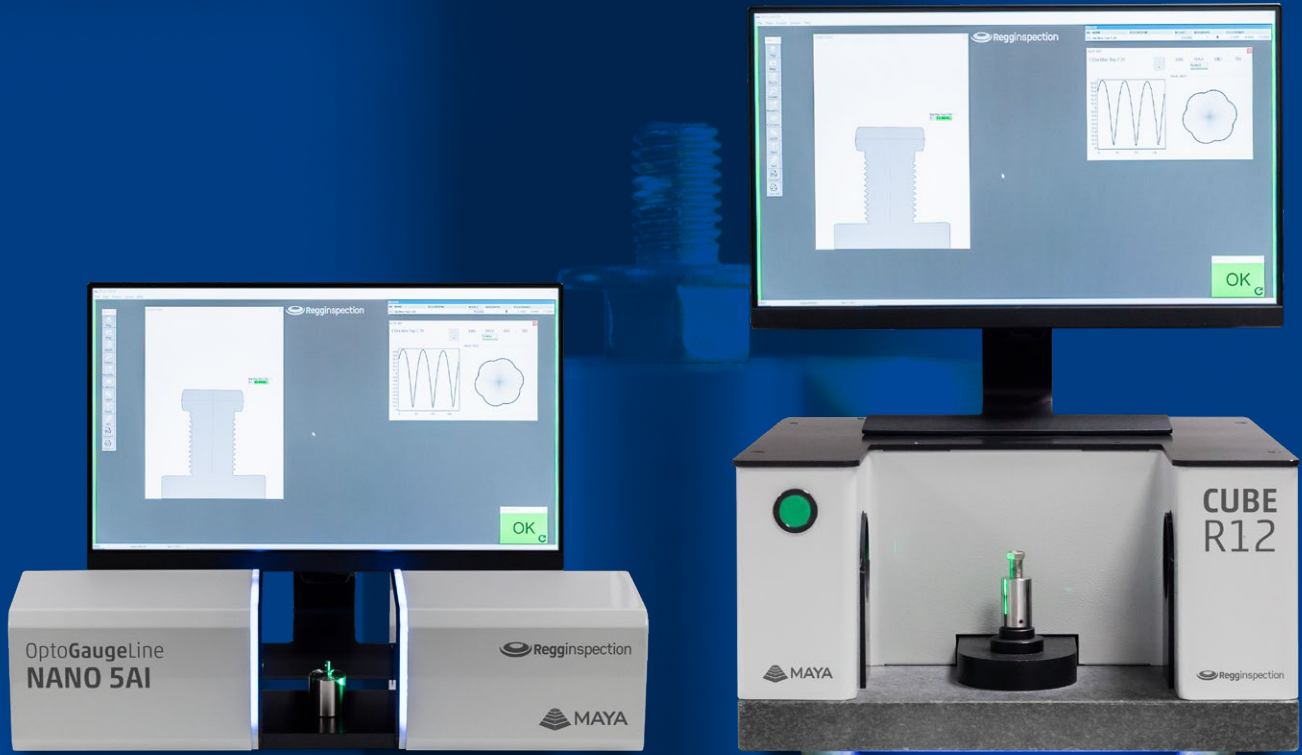


# OptoGaugeLine



Nano

Cube

## All in one

These instruments replace several expensive, traditional measuring tools such as calipers and dedicated benches. The measuring is reliable and independent of potential manual mistakes of operators.

## Fast and reliable

Nano and Cube are manufactured to be reliable and precise measuring instruments, while being designed to be easy to use. Measurements are taken all at once in less than a second. The devices work in a temperature between 0 and 40° C.



Designed by Regg Italian Engineers, Nano & Cube are integrated & supported in the USA by Maya.

## First article inspection

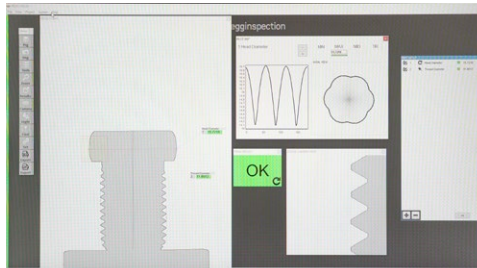
INDUSTRY 4.0  
READY 



HIGH PRECISION INSPECTION SYSTEMS

# Features and benefits

- Modular, compact and portable
- All measurements in real time
- Software with 3 access levels
- Linear and radial axis measurements
- Pre-set limits
- Visual graphs
- Easy saving of programs and measurement data
- Possibility to export all data via USB port or Wireless
- Ready to connect to a printer
- High resolution digital camera system with high quality telecentric optics
- Special workholding fixture
- Optional workholding for automatic part rotation



## Options

- Barcode scanner
- Special toolholders
- External gauges
- Foot pedal input

Machine Specifications	Nano 5AI	Cube 5		Cube 12	
Camera resolution	5 MP	5 MP		12 MP	
Bi-Telecentric Lens	Included	Included		Included	
Collimated telecentric backlight	Included	Included		Included	
PC with Windows 10 Embedded (P)	Optional	Optional		Optional	
Rotation module (R)	-	Optional		Optional	
Reporting ready to print	Included	Included		Included	
Size	-	M	L	M	L
Vision Area (W x H, mm)	20 x 25	30 x 40	60 x 80	30 x 40	60 x 80
Measuring Uncertainty *	Length L (mm): U(95)** 2+L/100µm		Diameter D (mm) U(95)** 1+D/100µm		
Dimensions (mm)	600 x 150 x 150	450 x 450 x 200	576 x 625 x 245	450 x 450 x 200	576 x 625 x 245
Weight (kg)	10	25	32	25	32
Power supply	110/220V - 50/60 Hz.				

\* Calculated following DIN 1319 part 3 / ISO norms on a reference master part (Ambient temperature at 20°C±1°).  
 \*\* U95 is defined (according to the ISO Guide to the Expression of Uncertainty in Measurement [GUM]) as a 95% uncertainty confidence.  
 All specifications are subject to change without prior notice. All pictures are for reference only. © Copyright REGG Inspection S.r.l.

Designed by Regg Italian Engineers, Nano & Cube are integrated & supported in the USA by Maya.



**Regg Inspection Corp.**  
 28003 Center Oaks Ct #107  
 Wixom - MI 48393 - USA  
 Tel. +1 248 308 3639 - Fax +1 248 493 5920  
[sales@regginspection.com](mailto:sales@regginspection.com)  
[www.regginspection.com](http://www.regginspection.com)



**Maya Gage Co. Inc.**  
 20770 Parker St.  
 Farmington Hills - MI 48336 - USA  
 Tel. +1 248-471-0820  
[sales@mayagage.com](mailto:sales@mayagage.com)  
[www.mayagage.com](http://www.mayagage.com)